

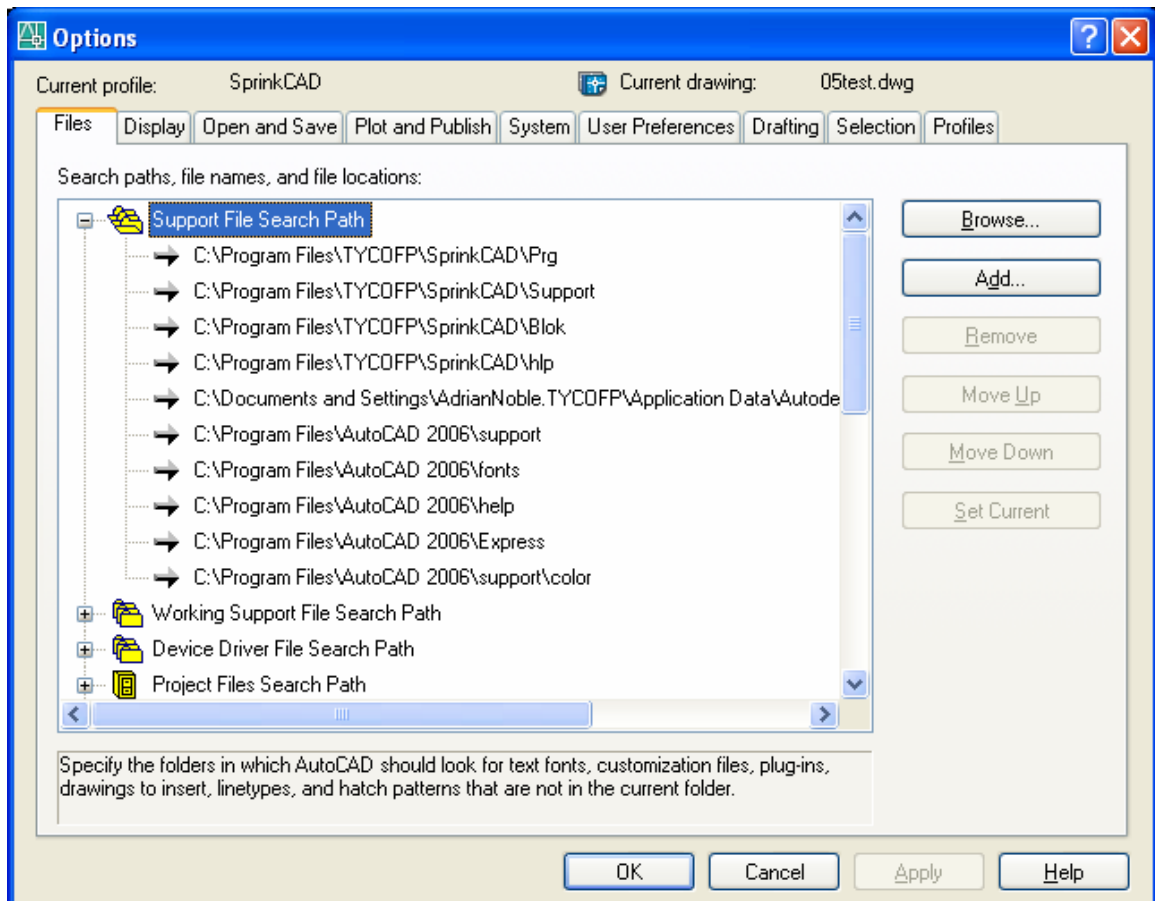
## Directions for manually adding SprinkCAD to AutoCAD

SprinkCAD may need to be loaded manually into AutoCAD in some cases. Because SprinkCAD runs within the AutoCAD environment, two areas of AutoCAD need to be adjusted:

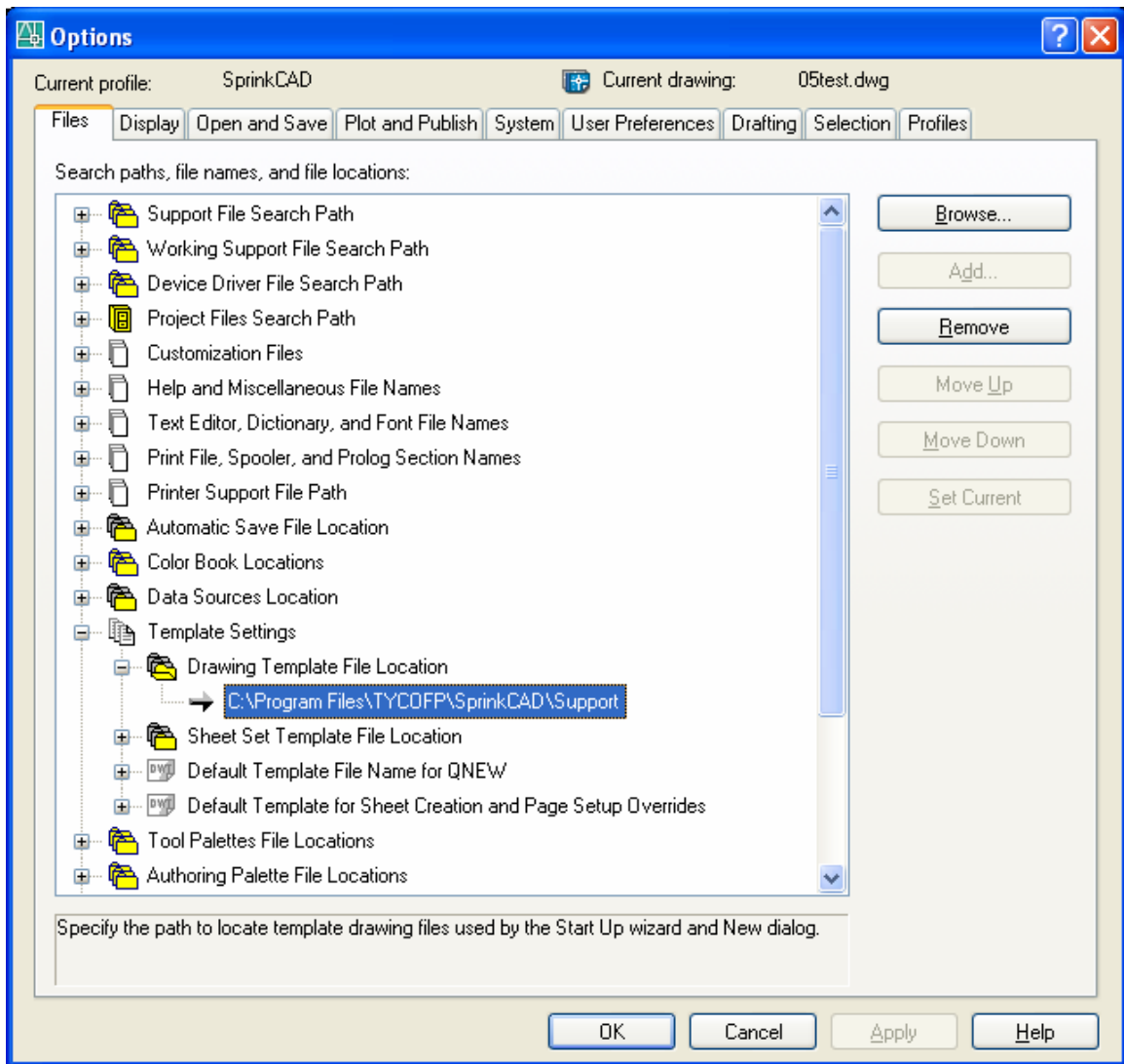
- 1) The Support file search path needs additions, and
- 2) The SprinkCAD menus need to be loaded.

### The Support File Search Path:

- 1) Type "OPTIONS" in the AutoCAD command line and press 'Enter'
- 2) Select the 'Files' tab
- 3) Click the '+' next to 'Support File Search Path'
- 4) Add the 4 SprinkCAD directories shown below using the 'Add' and 'Browse' Buttons located on the right of the dialog box. **The 4 SprinkCAD directories** will appear at the bottom of the list and **will need to be moved to the top** as shown below (Use the 'Move Up' button).



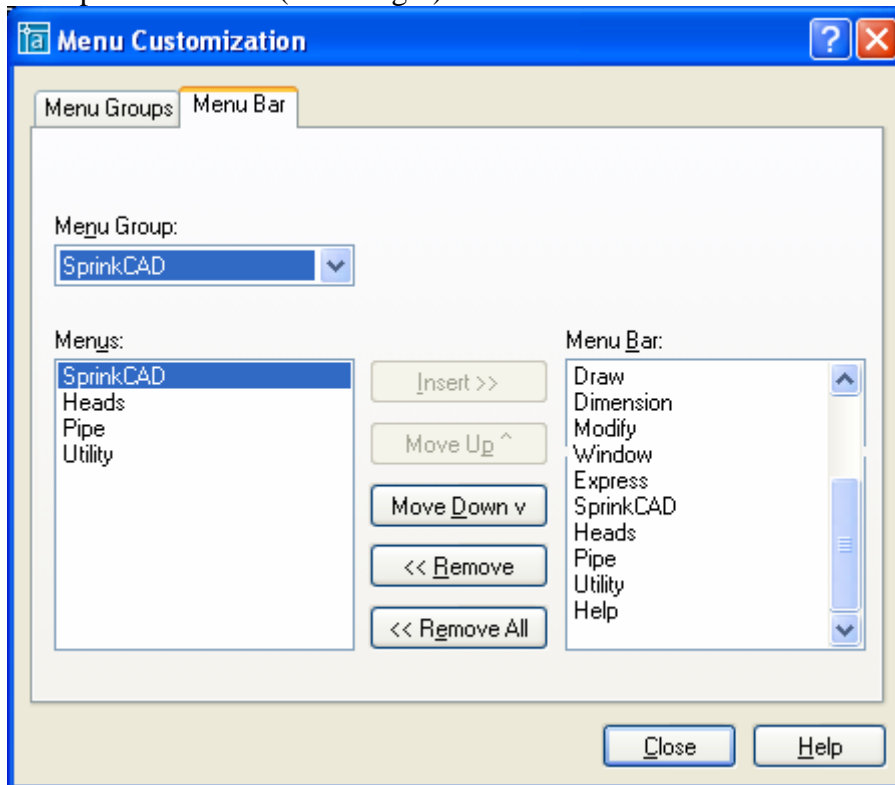
5) Change the 'Drawing Template File Location' Directory to the SprinkCAD support directory as shown below by highlighting the original item and using the 'Browse' button.



### The SprinkCAD Menus:

- 1) Type "MENULOAD" in the AutoCAD command line and press 'Enter'
- 2) In the 'Menu Groups' tab select 'Browse'
- 3) At the bottom of the 'Select Menu File' dialog change the 'Files of Type' to "Menu Template (\*.mnu)"
- 4) Browse to the SprinkCAD Support folder:  
(C:\Program Files\TycoFP\SprinkCAD\Support) and double click on the sp2000.mnu (this file may be called 'SprinkCAD.mnu in newer releases).  
Depending on your Microsoft Windows settings you may or may not be able to see the file extension.

- 5) After double clicking on the MNU file Select 'Load' back on the 'Menu Groups' tab. Then select 'Yes' in response to the AutoCAD warning.
- 6) In the 'Menu Bar' tab select the sp2000 (or SprinkCAD depending on release) from the 'Menu Group:' drop down.
- 7) Insert each item on the left (Menus) into the right (Menu Bar). As these items are added to the right side you will be able to see them at the top of AutoCAD. The order they appear on the right (from top to bottom) is the order they appear at the top of AutoCAD (left to right). See below:



(AutoCad 2004 users will not see the 'Move Up / Down' buttons)

- 8) Close AutoCAD, then launch AutoCAD again (you do NOT need to reboot your computer).