

SprinkCAD®

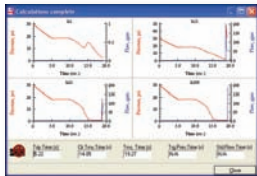
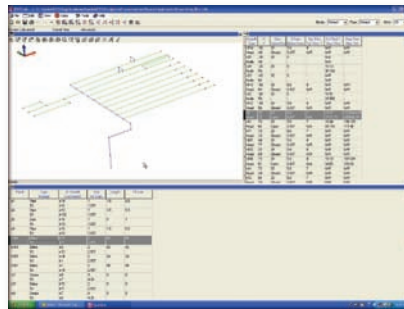
Fire Protection Software for the Design Professional



SprinkFDT™

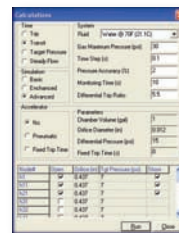
The First Program To Be Listed By Underwriters Laboratories and Factory Mutual Specification Tested For the Calculation of Dry Type Systems Per NFPA® Requirements.

SprinkFDT software is the latest software from SprinkCAD®. Offering the first dramatic advancement in fire protection technology since the introduction of hydraulically calculated systems over 30 years ago, SprinkFDT software now empowers a sprinkler designer to accurately predict the time it takes to trip a dry valve and deliver water to the remote area without the requirement of a physical trip test (see NFPA 13 2002, chapters 7 and 11).

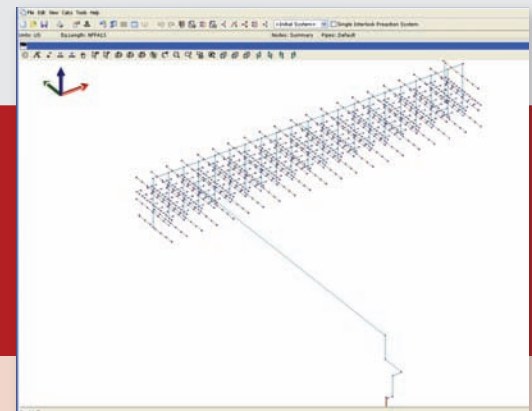
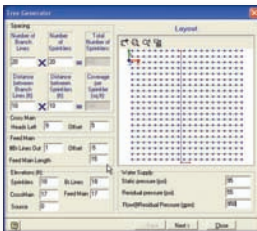


Simple input and summary screens allow the user to quickly define a sprinkler system and evaluate the need for an accelerator or design modification.

SprinkFDT software uses the same interface and file structure as our powerful SprinkCALC™ program, making hydraulic and delivery time calculation input even quicker. Simply calculate the system using the SprinkCALC program, open the SprinkFDT program, select the open sprinklers, and evaluate the dry system's performance.



Many systems that exceed the 750 gallon limit can now be installed reducing the need for a 60 second physical trip test. During the development and testing of SprinkFDT software, we evaluated properties that could have reduced the number of dry systems installed had this program been available at design time. On evaluated properties and controlled tests, calculated results have been within seconds of actual time – usually within two seconds difference of stopwatch accuracy.



FEATURES

Throw out the old thinking of dry system performance being based strictly upon the volume of the sprinkler system piping...

- *Until now, many other factors have been ignored that greatly impact the delivery time of water to a fire.*
- *The water supply was never a consideration as long as the system was kept small enough to avoid a 60-second trip test.*
- *The SprinkFDT™ program proves water supplies are one of the most critical components of a dry system, just as it is in hydraulic calculations.*
- *The path that the water travels to the fire is also critical. After a valve trips, a center-fed system of 2000 gallons will deliver water in approximately the same amount of time as an end-fed system with 1000-gallon capacity.*
- *This release of SprinkFDT™ supports multiple headsets allowing the user to quickly evaluate various areas of a dry system with the use of a single file.*

For **FREE** SprinkCAD®
Demonstration Software,
Information or Technical Support
contact us at

800-495-5541

To purchase software or for
 additional information on
 the SprinkCAD Software Suite
 visit our website at:

www.sprinkcad.com.

MINIMUM SYSTEM REQUIREMENTS

- Intel® Pentium® Series processor or compatible
- Microsoft® Windows® 2000/XP
- 1024 x 768 video resolution
- CD-ROM or DVD drive
- 512 MB of RAM

SprinkCAD, SprinkFDT and Tyco are either registered trademarks or trademarks of Tyco and/or its affiliates in the United States or other countries. Intel and Pentium are registered trademarks or trademarks of Intel Corp. or its subsidiaries in the United States and/or other countries. Microsoft and Windows are registered trademarks of Microsoft Corporation in the United States and/or other countries. NFPA 13 is a trademark of National Fire Protection Association. All other brand names, product names or trademarks belong to their respective holders.

Copyright © 2006 Tyco Fire Products LP. All rights reserved.
 Printed in USA / 05.06

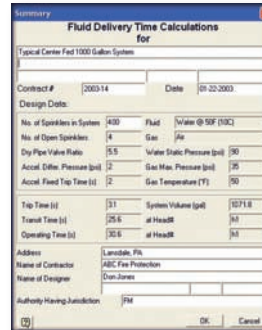


In just a few keystrokes, users can determine the need for an accelerator on a dry system. Any manufacturer's equipment can be evaluated by inputting the trip ratio of the dry valve and/or the activation parameters of an accelerator.

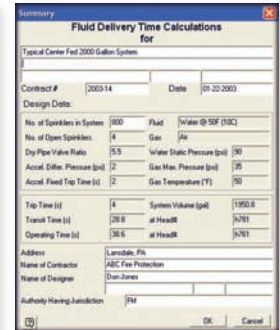
Throw out the old thinking of dry system performance being based strictly upon the volume of the sprinkler system piping. This has been proven to be flawed. Until now, many other factors have been ignored that greatly impact the delivery time of water to a fire. The water supply was never a consideration as long as the system was kept small enough to avoid a 60-second trip test. The SprinkFDT™ program proves that the water supply is one of the most critical components of a dry system, just as it is in hydraulic calculations. The path that the water travels to the fire is also critical. After a valve trips, a center-fed system of 2000 gallons will deliver water in approximately the same amount of time as an end-fed system with 1000-gallon capacity.

Another neglected element is temperature. Delivery of water to a remote sprinkler at -20F takes longer than at a temperature of 80F. The 2002 NFPA® 13 code allows multiple open heads to be calculated, reducing the trip time and delivery time to a remote area as opposed to a single-sprinkler, 60-second test. SprinkFDT software allows one to 19 open sprinklers.

SprinkFDT software allows dry system parameters to be evaluated during the bid process. The ability to combine two dry systems into a single system could potentially save thousands.



*40 branch center-fed
 2000-gallon system
 compared to...*



*...20 branch end-fed
 1000-gallon system*

SprinkFDT (Fluid Delivery Time Calculator) in NFPA 13, 2002		
NFPA 13, 2002 Specifications		Comments in this column are by SprinkFDT (Fluid Delivery Time Calculator)
7.2.3' Size of Systems — Volume Limitations.	7.2.3.1' Unless the requirements of 7.2.3.2 or 7.2.3.3 are met, not more than 750 gal (2832 L) system capacity shall be controlled by one dry pipe valve.	Note that the volume restriction can be exceeded under either of two options: <ul style="list-style-type: none"> • Physical testing with a 60 second limit, or • Calculation with time limits based on the hazard / occupancy
7.2.3.2 Piping volume shall be permitted to exceed the requirements of 7.2.3.1 when the system design is such that water is delivered to the system level connection in not more than 60 seconds, starting at the normal air pressure on the system, and at the time of fully opened inspection test connection.	7.2.3.3 Piping volume shall be permitted to exceed the requirements of 7.2.3.1 when dry systems are calculated for water delivery in accordance with 11.2.3.9.	7.2.3.3 allows the use of the Calculation method, in accordance with section 11.2.3.9.
7.2.3.4 Check valves shall not be used to subdivide the dry pipe system.	7.2.3.5 Galvanized dry pipe systems shall not be installed.	
11.2.3.9 Dry System Water Delivery.	11.2.3.9.1 Calculations for dry system water delivery shall be based on the hazard shown in Table 11.2.3.9.1.	11.2.3.9.2 requires the use of a calculation program listed by a nationally recognized laboratory.
Table 11.2.3.9.1 Dry System Water Delivery		
Hazard	Number of Most Remote Sprinklers Initially Open	Maximum Time of Water Delivery
Residential		15 Seconds
Light	1	60 Seconds
Ordinary I	2	90 Seconds
Ordinary II	2	60 Seconds
Extra I	4	60 Seconds
Extra II	4	60 Seconds
High Piled	4	60 Seconds

A brief summary of NFPA 2002

a vital part of your world