

SprinkCAD®

Fire Protection Software for the Design Professional



SprinkCODE™ 2002

Interactive NFPA 13® Code Selector

Whether it's an estimate or the final design, this Code Expert is an essential member of your staff.

The codes are not getting any simpler. When the complex details of storage height, ceiling height, aisle widths, pallets, bins, encapsulation, commodities, plastics, etc. make the difference between a bid and a contract, between a proper design or a review nightmare, you'll be glad SprinkCODE is there to guide you.

Intelligent interactive screens offer the choices needed to quickly and accurately narrow the options for the desired system density and coverage area, (or special application sprinkler). Within seconds the available options can be displayed for any NFPA 13 2002 code requirement.

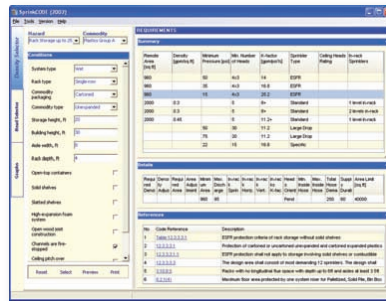
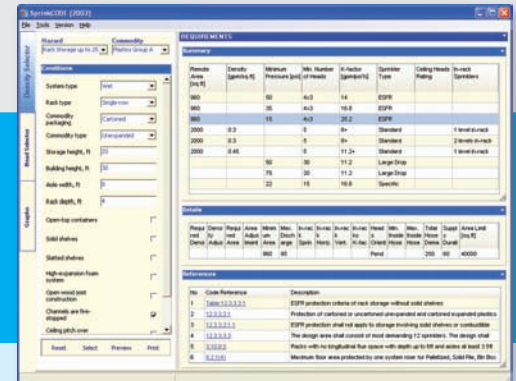
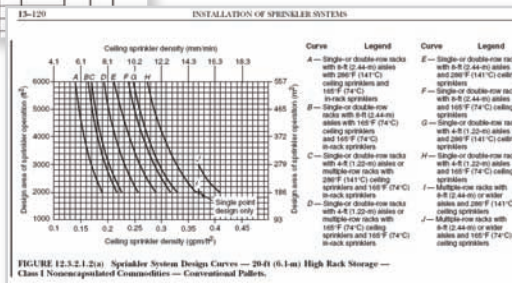


Table 12.3.3.1.1 ESR Protection of Rack Storage without Solid Shelves of Plastic Commodities
Neared Up to and Including 25 ft (7.6 m) in Height

Storage Configuration	Commodity	Maximum Storage Height (ft)	Maximum Ceiling-Rack Height (ft)	Minimum Clearance (ft)	Orientation	Maximum Opening (sq ft)	ESR Back Sprinkler Requirement	ESR System	ESR Density (lb/min)	ESR Height (ft)	
High-density, double-row and multiple-row rack (open-type commodity)	General merchandise	30	7.6	10.2	Upright	50	5.4	No			
				14.8	Upright on pallets	50	5.4	No			
				20.2	Upright on pallets	75	2.4	No			
		30	9.1	10.2	Upright	50	5.4	No			
				14.8	Upright on pallets	50	5.4	No			
				20.2	Upright on pallets	75	2.4	No			
	18	10.2	10.2	Upright	50	5.4	No				
			14.8	Upright on pallets	50	5.4	No				
			20.2	Upright on pallets	75	2.4	No				
		18	13.7	10.2	Upright	50	5.4	No			
				14.8	Upright on pallets	50	5.4	No			
				20.2	Upright on pallets	75	2.4	No			

During the process of selecting the desired hazard options, simply select the NFPA 13 2002 requirement detail and the page of the code will appear for review or printing.



FEATURES

So put away that dog-eared copy of the Code...

- A licensed electronic copy of the NFPA 13 2002 code is supplied with SprinkCODE CD. This enables verification of the options selected in detail, and allows a fresh copy of the applicable code to be printed.
- SprinkCODE will easily select the correct curve or table and show the required steps necessary to apply credits, penalties and interpolations for the selected hazard.
- Quickly build the necessary N1.85 graphs with options to display flow test curves, fire pump curves and combined curves as desired.
- New Head Selection option has been added to help select the appropriate sprinkler for the application.

For **FREE** SprinkCAD®
 Demonstration Software,
 Information or Technical Support
 contact us at
800-495-5541

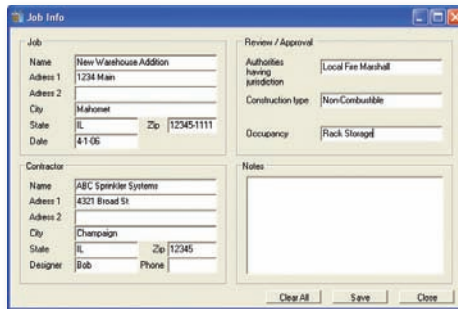
To purchase software or for
 additional information on
 the SprinkCAD Software Suite
 visit our website at:
www.sprinkcad.com.

MINIMUM SYSTEM REQUIREMENTS

- Intel® Pentium® Series processor or compatible
- Microsoft® Windows® 2000/XP
- 1024 x 768 video resolution
- CD-ROM or DVD drive
- 512 MB of RAM

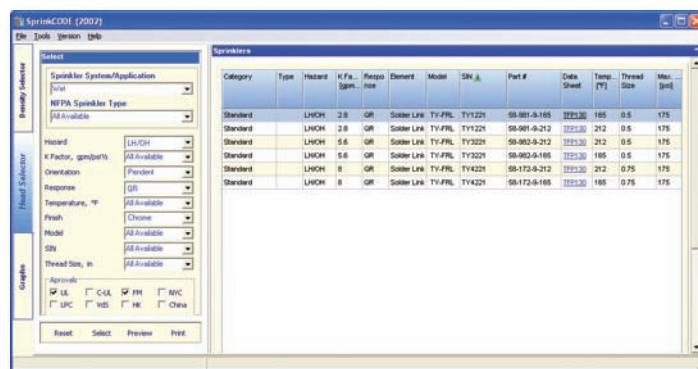
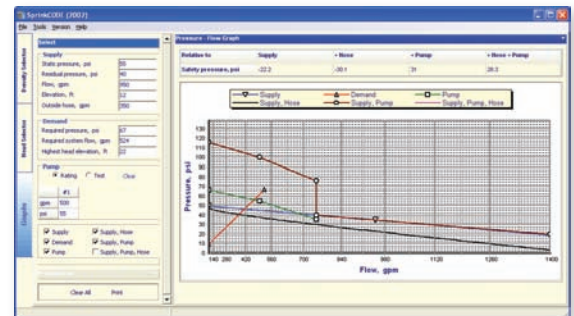
SprinkCAD and Tyco are either registered trademarks or trademarks of Tyco and/or its affiliates in the United States or other countries. Intel and Pentium are registered trademarks or trademarks of Intel Corp. or its subsidiaries in the United States and/or other countries. Microsoft and Windows are registered trademarks of Microsoft Corporation in the United States and/or other countries. NFPA 13 is a trademark of National Fire Protection Association. All other brand names, product names or trademarks belong to their respective holders.

Copyright © 2006 Tyco Fire Products LP. All rights reserved.
 Printed in USA / 05.06



Job information can be entered at estimate time and used later for the final design — making it easy to keep the decision process in order and on file.

The Flow Graph option quickly displays the 1.85 Hydraulic Graph and includes options to display flow test curves, fire pump curves and combined curves as desired.



A new Head Selector Option has been added to SprinkCODE 2002 that simplifies the process of selecting the appropriate sprinkler for the specified application.

SprinkCODE 1999 is still available for those needing reference to the NFPA 13 1999 edition.